

ARE YOU SAFE AT HOME? DAY

SUPPORTER INFO SESSION

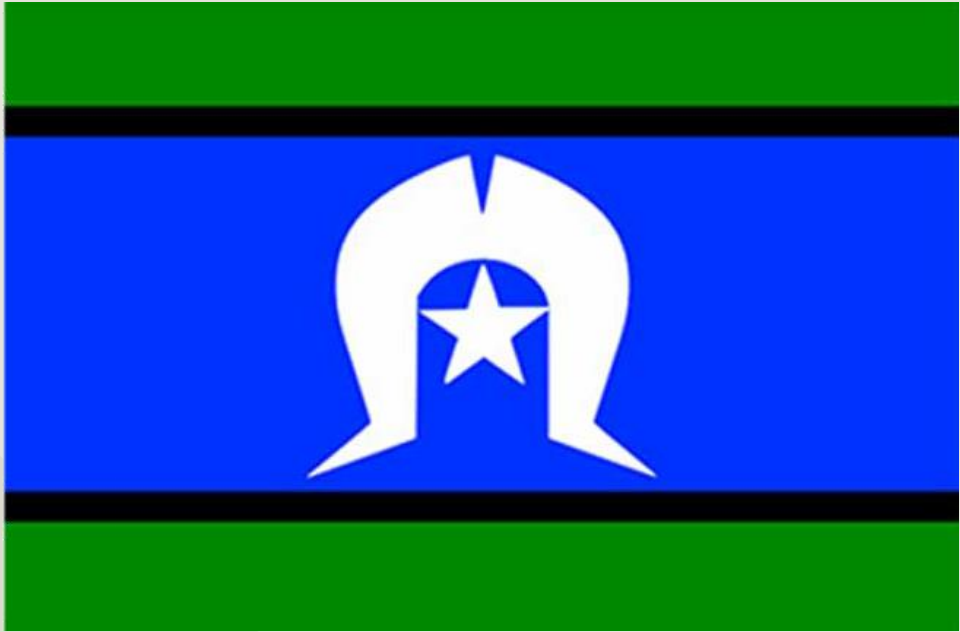
Thursday 6 April 2023

Hayley Williamson, Communications Manager
Megan Kelly, Digital Engagement Advisor

SAFE+EQUAL



ACKNOWLEDGEMENT OF COUNTRY



SAFE + EQUAL

HOUSEKEEPING

- Webinar will be recorded
- Captions available through Zoom
- Add questions to the Q&A throughout the session
- Respectful and safe conversation
- Acknowledgement of victim survivors
- Support services are available

OVERVIEW

WHAT IS ARE YOU SAFE AT HOME?

- A national initiative, since 2020
- Designed to break down fear and stigma
- Clear information on:
 - What to look out for
 - What supports are available
 - How to start a conversation
- areyousafeathome.org.au



SAFE+EQUAL

WHAT ARE WE DOING ON 10 MAY, 2023?

- Delivering an awareness raising day that:
 - facilitates the conversation that everyone has a role to play in recognising and responding to family violence
 - amplifies Are You Safe at Home? messaging and resources
 - brings awareness to family violence as a workplace issue

WHO ARE OUR AUDIENCES?

- Workplaces
 - Senior leaders
 - Employees
- General public
- National lens



SAFE+EQUAL

WHAT ARE OUR OBJECTIVES?

- To **destigmatis**e conversations about family violence by building understanding and giving people the skills to listen and respond safely
- To **encourage** people in their workplaces to engage with the content and resources of the Are You Safe at Home campaign
- To **prompt** people to take further steps and action within their workplaces, and to identify the value of specialist sector expertise in supporting this

The background features a light orange color with several darker orange, wavy, organic shapes that flow from the top left towards the right side of the frame. The shapes are smooth and fluid, creating a sense of movement and depth.

TOOLKIT

KEY MESSAGES

Are You Safe at Home Day? 2023

10 May

We all have a role in recognising and responding to family violence, wherever we live, work and play.

This 10 May, start the conversation with a colleague or loved one.



SAFE+EQUAL

TOOLKIT

- Background
- How you can help
- Key messages
- Social media tiles and messaging
- Printable promotional material
- Workplace support messaging



**ARE YOU SAFE
AT HOME ?**

10 MAY 2023

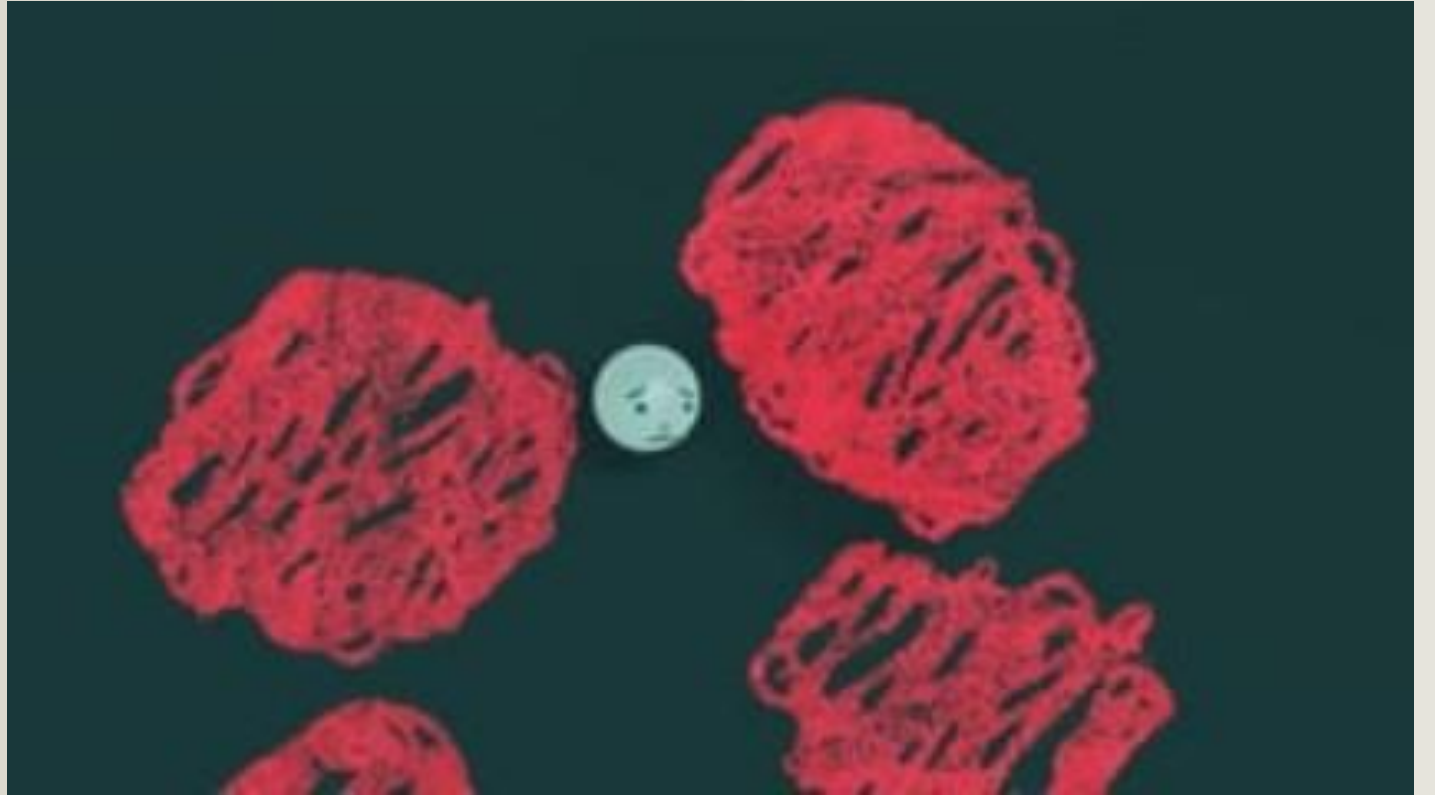
COMMUNICATIONS TOOLKIT

SAFE+EQUAL

VIDEO SERIES

“Living In Fear”

Learn more about what family violence is, and how you can access support if you are experiencing abuse.



SAFE + EQUAL

VIDEO SERIES

“How do I ask my friend or family member if they are safe at home?”

Learn more about how to ask a loved one if they are safe at home.

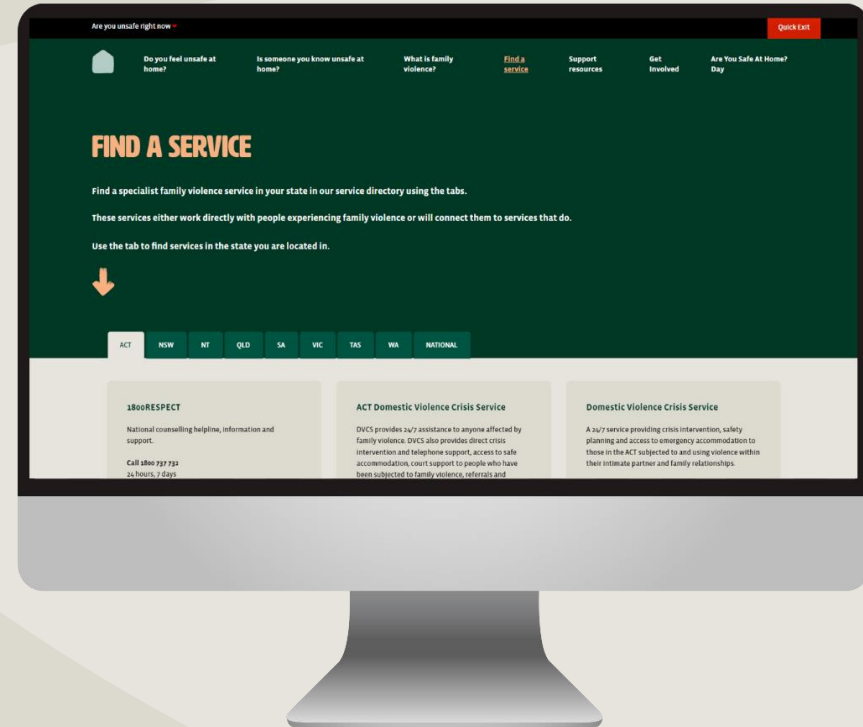


SAFE + EQUAL

FIND A SERVICE DIRECTORY

For national information about tailored support services for LGBTIQ+ people, Aboriginal and Torres Strait Islander people, older people, men who have experienced family violence and people who have experienced sexual assault visit areyousafeathome.org.au

If you'd like to add a new service or change the details of an existing service, please contact us by emailing communications@safeandequal.org.au.



SAFE + EQUAL

ELEARN

- Designed for people in workplaces
- Information about how to recognise and respond to family violence in the workplace.
- Launching on 10 May 2023
(pre-register via our website)

The eLearn will cover content including:

- what family violence is
- how to recognise the signs
- how to have safe and respectful conversations in your workplace



SAFE + EQUAL

ARE YOU SAFE AT HOME? DAY WEBINAR

Join us for a conversation co-facilitated by Safe and Equal's Strategic Projects and Engagement Manager and Lived Experience Program Officer.

- How to have safe and respectful conversations about family violence at work.
- What family violence is, who it impacts, what the signs are, and how to have safe and respectful conversations with colleagues about family violence.
- Two lunchtime webinars across Victoria and Western Australia (in partnership with Centre for Women's Safety and Wellbeing, Perth)

Event Details

Wednesday 10 May 2023

- 12.30pm-1.30pm (AEST)
- 12.30pm-1.30pm (AWST)

Zoom Webinar - registration required

Event will be recorded

KEY TAKEAWAYS

- Check out the Are You Safe at Home? Toolkit and share the messages and resources in the lead up to 10 May.
- Register for the Are You Safe at Home? Day Webinar on Wednesday 10 May 2023.
- Subscribe to our Are You Safe at Home? newsletter to be notified of the launch of the eLearn and new resources.
- This 10 May, start the conversation with a colleague or loved one.

QUESTIONS?

Contact the Safe and Equal Communications team by
emailing communications@safeandequal.org.au

The background is a solid teal color with a large, wavy, lighter teal shape that flows from the top left towards the right side of the frame. The text is centered within this lighter shape.

THANK YOU